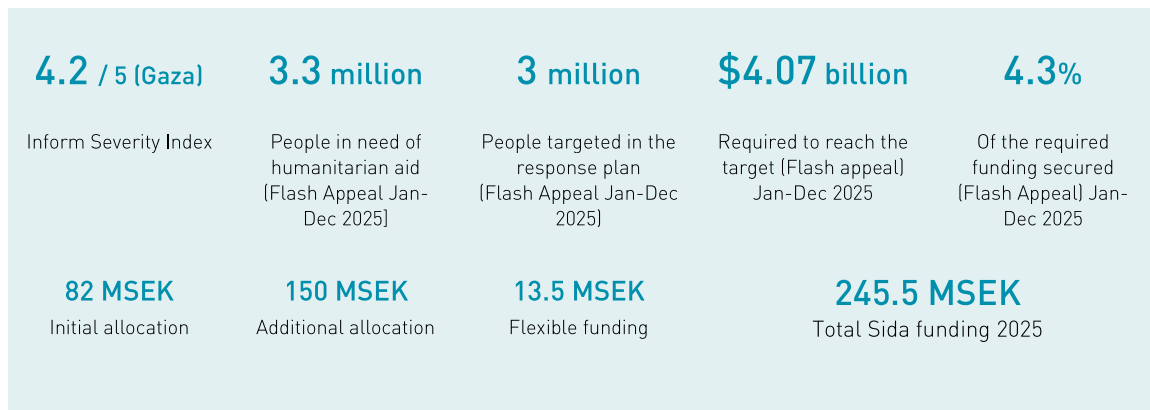


1. Crisis overview



The conflict in Palestine has caused one of the world’s most complex, longest and currently most intense protracted humanitarian crises, characterized by widespread alleged violations and abuses of international humanitarian law (IHL) and of human rights law by the warring parties. Humanitarian needs have primarily been driven by hostilities between Israeli forces and Palestinian terrorist groups, aggravated by the socio-economic and protection impact of Israel’s occupation of Palestinian territory and de-facto long term blockade on the movement of people and goods in and out of the Gaza Strip, as well as internal Palestinian political divisions. Humanitarian needs have primarily been driven by hostilities between Israeli forces and Palestinian terrorist organizations, aggravated by the socio-economic and protection impact of Israel’s occupation of Palestinian territory and de-facto long term blockade on the movement of people and goods in and out of the Gaza Strip, as well as internal Palestinian political divisions.

Since the Hamas terrorist attacks on Israel on 7 October 2023, and the subsequent Israeli military operation, the situation in Gaza has changed dramatically and is also directly affecting the situation in the West Bank. Over a year of persistent fighting in Gaza, including large-scale aerial attacks by Israel, has caused extremely high levels of civilian fatalities and suffering, decimated livelihoods, crippled food systems, demolished infrastructure, caused a collapse of health, water and sanitation services, and led to catastrophic acute food insecurity. Aid workers delivering assistance face extraordinary risks, with over 399 humanitarian staff killed since 7 October 2023. These risks, coupled with strict Israeli restrictions on entry of humanitarian supplies into Gaza, limitations on commercial import of goods, constrained aid movements

within the area, and widespread lawlessness, have resulted in an insufficient and scattered humanitarian response.

The West Bank is also subject to an increasingly coercive environment, generated by the expansion of Israeli settlements and a significant increase in settler violence, coupled with military operations, demolitions, and forced displacements, resulting in alleged human rights abuses and rising humanitarian needs. Israeli military restrictions on civilian movement have caused unemployment and poverty to increase drastically. Several refugee camps are nearly empty in the northern West Bank after Israel launched Operation Iron Wall on 21 January, making it the longest operation in the West Bank since the second intifada. Meanwhile, armed Palestinians are also increasingly active in these areas.

On 19 January 2025, a temporary ceasefire between Israel and Hamas entered into force, which lasted temporarily. The ceasefire significantly improved operational conditions, including the ability to use more of the border crossings into Gaza to move supplies and possibilities to operate and deliver humanitarian services in a more unhindered manner. However, the ceasefire broke down, and since 2 March Israeli authorities have halted the entry of all lifesaving supplies, including food and medicine. Repeated requests to collect aid at the border crossing have also been rejected, no further hostages have been released and Israel has cut power to southern Gaza's desalination plant, limiting access to clean water for 600,000 people.

2. Humanitarian needs & affected population

Out of a total population of 5.5 million, approximately 3.3 million people need urgent humanitarian assistance. This includes Gaza's entire population of 2.1 million and 1.2 million people living in the West Bank. As of 25 March 2025, estimated casualties since 7 October stand at approximately 1,600 Israelis and foreign nationals and over 50,000 Palestinians in Gaza. It is expected that these numbers will increase since many are trapped under the rubble in Gaza. Since October 2023, OCHA has reported more than 113,000 injuries and as many as 1.9 million people, or some 90 per cent of the population have been internally displaced in Gaza.

Almost all infrastructure has been affected, some 69 per cent is estimated to be destroyed. For example, some 92 per cent of housing units and around 81 per cent of roads have been destroyed. The vast majority of people have been residing in overfull UNRWA premises, such as schools, and in basic makeshift shelters in severely overcrowded areas. The living conditions are extremely difficult, especially for women, boys, girls, and people with special needs. People have almost no access to food, water, health care and sanitary facilities. Moreover, a majority of Gaza's educational facilities have been hit disrupting children's education.

The restrictions on goods from entering Gaza and destruction of around 82 per cent of agricultural land have severely disrupted the food supply chains. As a result, the whole population has been facing acute food shortages. The Integrated Food Security Phase Classification (IPC) acute food insecurity analysis confirms that famine is imminent. 91 per cent (1.95 million) of the population is projected to face high levels of acute food insecurity classified

in IPC Phase 3 (Crisis) or above. A majority of people face emergency or catastrophic levels of food security (876,000 people IPC Phase 4 and 345,000 people IPC Phase 5). Malnutrition amongst children is at alarming levels, with some 60,000 children facing acute malnutrition with irreversible effects on their development.

At the same time, Gaza faces a public health catastrophe. The destruction of health infrastructure, killings of medical personnel and obstruction of ambulance access to the injured and to health facilities, are contributing to a collapse of the healthcare system. 22 out of 35 hospitals are out of service and the rest are functioning with very limited capacity. 11 out of 27 of UNRWA health centres are operational with only limited medical supplies. Mass displacement, overcrowding in shelters and damage to water, sanitation and waste infrastructure is contributing to the spread of diseases. A 90 per cent reduction in water consumption to just a few litres per day per person is another risk factor for people's survival. Severe stressors for mental health are affecting the whole population.

Protection of civilians from hostilities has been one of the most pressing challenges. A lack of respect for IHL by the warring parties has put the civilian population at an extremely high risk. Children, women, elderly and people with disabilities have been disproportionately affected, exemplified by more than 70 per cent of the Palestinian casualties being either women or children. The most vulnerable groups are facing an elevated degree of risk across the protection spectrum, for example with regards to child protection and gender-based violence (GBV). Girls in particular face additional protection risks including the lack of privacy and safety concerns impacting their dignity, mobility, mental and physical health. It is estimated by UNICEF that more than one million children need psychosocial support and more than 17,000 children in Gaza are estimated to have been unaccompanied and have been separated from their families.

At the same time, tensions and violence continue to rise in the West Bank, fuelled mostly by increasing settler violence, Israeli army raids and access and movement restrictions. This has resulted in more than 1,000 Palestinian fatalities, more than 16,000 injuries, and some 8,800 people displaced between January 2023 and December 2024. Since the initiation of operation Iron Wall, in northern West Bank, approximately 40,000 Palestinians have been forcibly displaced. An increasing number of some 900 closure regimes by the Israeli military restrict the movement of goods and people in the West Bank. The socio-economic situation has deteriorated, spurred by the termination of 200,000 work permits for Palestinians who used to work in Israel. The Palestinian Authority (PA) is no longer able to pay salaries of its civil servants as the Israeli Government has withheld custom and tax revenues that it collects on behalf of the PA. As a result, it is expected that Palestinians will fall further into poverty, face increased vulnerability and heightened protection risk.

3. The humanitarian response

The escalated conflict has further restrained Palestinian economic and institutional capacity, contributing to the PA's limited ability to uphold state institutions and respond to the escalating crisis. In Gaza, the private and public sector has also been drastically affected, in particular

given the pre-existing lack of municipal authorities to deliver basic services. Commercial cargo remains largely blocked from entering Gaza, and Israel has imposed a blockade of electricity and water services into Gaza. This has left international humanitarian assistance as the main lifeline for the population. The operational conditions in Gaza have been dire since 7 October. Aid operations have been hindered by the existence of military operations, Israeli restrictions and hindrance of humanitarian aid, destroyed infrastructure and social services, and the breakdown of law and order. Furthermore, cuts in telecommunication lines, restrictions to establish means of communications and bringing in safety equipment, have also strongly impacted the humanitarian response. The lack of humanitarian access and safe space to deliver life-saving assistance in Gaza have pushed the humanitarian response to the brink of collapse. The temporary ceasefire included improving operational conditions for humanitarian aid, and the humanitarian community managed to substantially increase the inflow of aid supplies and scaling up of humanitarian assistance to the population. However, the ceasefire was fragile and broke down in early March 2025. Since then the humanitarian situation has drastically worsened, with mass displacement, blockade of aid and crippling of the supplies of food, medicine, fuel and all other lifesaving supplies, Israeli rejection to engage with established humanitarian coordination mechanisms as well as expanded military operations and control over Gaza. The sustained blockade is forcing conditions that are causing a breakdown of civil order, which is increasing the risks for the population and the humanitarian actors.

The humanitarian response, as per the 2025 Flash Appeal, aims to provide immediate life-saving assistance and prevent further loss of life, through provision of emergency supplies and services within priority sectors, such as food, WASH, shelter, protection, nutrition, emergency healthcare and by addressing public health concerns. The appeal is estimated to meet the needs of 3.3 million people in Gaza and the West Bank. The main priority is to extend the humanitarian response to address the increasing levels of humanitarian needs and protection across Gaza.

Despite the many challenges, humanitarian actors continue to deliver partial humanitarian assistance and protection in Gaza and the West Bank, amongst them many local civil society organisations. Many organizations have, however, been forced to stop, limit, pause, or drastically adjust their humanitarian programmes. The ceasefire that was in place between 19 January and 18 March allowed humanitarian actors to significantly scale up the response and provided much needed respite. However, the resumption of military operations, and the denial by Israel of entry of humanitarian supplies have again severely inhibited the humanitarian response to reach the population in an adequate manner. Another, significant operational constraint currently impacting the response in Gaza is the legislation passed by the Israeli Parliament that came into effect in January 2025 banning UNRWA from operating in Israel. It is estimated that UNRWA continues to be responsible for an estimated 50 per cent of the response in Gaza and they also continue to facilitate the response of most other humanitarian actors.

Over the course of the war, entry points to Gaza have been blocked by Israel or have only been partially operational and now recently all entries are denied. The UN estimated that only

between 10-30 per cent of available humanitarian aid was allowed to enter Gaza during 2024. Furthermore, requested coordinated humanitarian movements have often been denied or impeded by Israeli forces. Lastly, as a consequence of the war there has been a breakdown of law and order, followed by an increasing occurrence of looting and “spontaneous aid distribution”, which has hampered the humanitarian community’s ability to ensure effective distributions. The humanitarian actors are consistently and persistently implementing and adapting risk mitigation measures to protect aid deliveries and enable a safer humanitarian space. For the implementation of the response plan, it is essential that the operational conditions change in 2025. Close monitoring of and advocacy around access constraints and operational risks remains a priority. The humanitarian community has tenaciously stressed that key requirements, if achieved, would create an enabling environment to deliver assistance to the population of Gaza. This includes more and efficient entry points, improved deconfliction to allow safe humanitarian space, allowing specific and critical humanitarian equipment and more cargo to enter, increase entry of fuel, decongestion of population, smooth visa issuance for humanitarian personnel and timely and flexible funding.

Given the high levels of violence against civilians in Gaza, protection serves are the foundation for the response, with a special focus on GBV and on protecting children. Given the access challenges in Gaza, the protection response has not been fully enabled to date. Humanitarian actors and community-led initiatives nevertheless try to ensure civilians are being protected to the extent possible. Protection actors also play a critical role in monitoring and documenting alleged violations of IHL. In the West Bank, work towards protection outcomes focus on reinforcing prevention, mitigation and response to settler violence, forced displacement, military incursions, and demolitions.

The global freeze and scale-back of US humanitarian funding announced in January 2025 is having major consequences on aid operations, and the Humanitarian Country Team is adapting the response in light of the new funding landscape. The Flash Appeal 2025 estimates a need for more than US\$6 billion to meet the needs of the population, but is asking for US\$4.07 due to the challenging access situation. The top donors have included USA, United Arab Emirates, European Commission Humanitarian Office (ECHO), Germany, and the UK. Notably, access impediments have made it challenging for humanitarian actors to operate, which is driving up operational costs.

4. Sida’s humanitarian allocationⁱ

Sida’s humanitarian allocation focuses on partners with a demonstrated capacity to deliver lifesaving humanitarian assistance and protection in Gaza and the West Bank. Sida’s allocation is primarily focusing on actors with ability to provide multisectoral assistance, with particular focus on food, WASH, protection, shelter and health, as prioritized in the Flash Appeal 2025. The selection of partners is also based on partners that have demonstrated ability to integrate protection measures in its programmes. Sida’s allocation is based on the understanding that all actors have been severely constrained by the limited access in Gaza, and to an increasing extent in the West Bank. Sida also acknowledges that partners are facing very high risk levels and that

partners have rigid risk mitigation measures and transparent reporting in place. Sida is encouraging continued dialogue on risk, while understanding that the majority of actors are operating on the basis of *no-regrets*, with increasing operational costs, and without possibility of fully reaching programme targets.

| PARTNER | SECTOR | INITIAL ALLOCATION (SEK) 2025 |
|-------------------|--|-------------------------------|
| UNICEF | Health, Child Protection, Nutrition, WASH | 20,000,000 |
| NRC | ICLA, Protection Education, Shelter, WASH, West Bank Protection Consortium | 18,000,000 |
| oPt HF | Food security, Health, WASH, Protection, Shelter, education | 22,000,000 |
| Swedish Red Cross | Health, protection, WASH, mental health | 7,000,000 |
| OXFAM | Food Security, WASH, Protection | 10,000,000 |
| ICRC | Health, IHL, Food security, WASH, Protection | 5,000,000 |
| TOTAL | | 82,000,000 |

| FLEXIBLE FUNDING & ADDITIONAL ALLOCATIONS 2025 | | |
|--|---------------------------------|-----------------------|
| PARTNER | FLEXIBLE FUNDING ^[1] | ADDITIONAL ALLOCATION |
| NRC | 5,000,000 | - |
| ACF | 2,000,000 | - |
| OCHA HF* | | 150,000,000 |
| MSB | 3,900,000 | |
| Diakonia | 2,600,000 | |
| TOTAL | 13,500,000 | 150,000,000 |

*Additional funding provided by the Swedish MFA for Palestine.

^[1] Flexible funding includes a mix of allocations such as Rapid Response Mechanism and other flexible funding mechanisms.

ⁱ The 2025 initial allocation of humanitarian funding is based on Sida's humanitarian allocation analysis methodology. The analysis reflects the current humanitarian situation across crises and is being updated continuously with the latest available data. The information in the HCA is based on reports, data, and information from partner organisations and other entities, as well as observations from field visits and dialogue with partners.