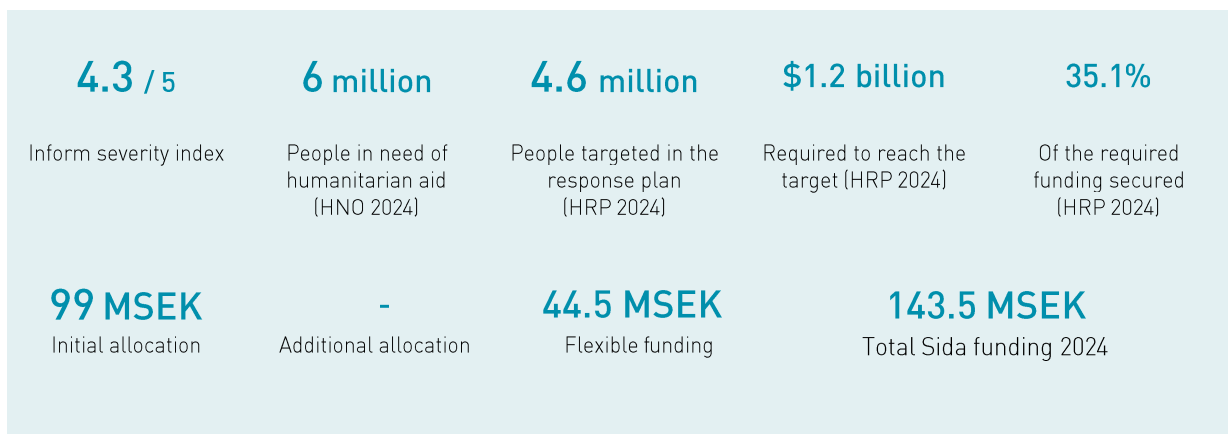


### 1. Crisis overview



Chad is facing multifaceted challenges, stemming from security issues linked to conflicts in neighbouring countries and exacerbated by the impacts of climate change, notably accelerated desertification and the diminishing of Lake Chad. The humanitarian situation in the country is dire, characterized by four principal crises: forced population movements, rampant food insecurity and malnutrition, widespread health emergencies, and the severe effects of climate change. Chad has one of the highest concentrations of displaced people globally, with over a million individuals, including refugees, asylum seekers, internally displaced persons, and returnees.

The outbreak of the crisis in Sudan has redirected funding to the eastern part of the country, creating a funding shortfall for the Lake Chad crisis response. The combination of ongoing conflicts, displacements, limited natural resources, and minimal access to social services has resulted in Chad being ranked near the bottom of the World Bank’s Human Development Index. The Lake Chad region frequently experiences epidemic outbreaks, exacerbated by inadequate healthcare coverage and limited access to clean water and sanitation. Looking ahead to 2024, humanitarian efforts should persist in prioritising multisectoral emergency assistance and protection for populations affected by conflict, including internally displaced persons, refugees, returnees, local inhabitants, and host communities, especially those in hard-to-reach areas. According to the World bank Poverty and vulnerability are pervasive in Chad, with 42.3 per cent of the population living below the national poverty line. Extreme poverty also remains high in the country and has increased significantly, rising from 31.2 per cent in 2018 to 34.9 per cent in 2021 and 35.4 per cent in 2023.

## 2. Humanitarian needs & affected population

Chad's humanitarian crisis is characterized by high needs due to intercommunity violence, displacement, food and nutrition insecurity, floods, and epidemics. Emergency camps are in dire need of resources for nutrition, healthcare, education, water, and sanitation, and there is a significant lack of shelter. Children are particularly vulnerable, with increasing risks of abuse, violence, and exploitation. The severity of child protection needs is catastrophic in certain regions, with crises including family separation due to humanitarian crises, high rates of children living without biological parents, and a large number of unaccompanied or separated children. The crisis has led to heightened risks of violence, sexual abuse, and exploitation, particularly for children who have become separated from their families.

Chad's urgent needs stem from a worsening humanitarian situation, particularly in the eastern region due to conflict, displacement, climate change, food insecurity, and health emergencies. More than 5.7 million people are food insecure, with 2.1 million facing severe hunger. In November 2023, Médecins Sans Frontières (MSF) raised concerns about the critical nutritional status of Sudanese refugee children in eastern Chad. This situation mirrors the extreme deprivation faced by survivors of the intense violence in Sudan. Despite being in Chad, new arrivals have an urgent need for more humanitarian aid, particularly emergency food assistance. Key findings of MSF's assessment in the Metché camp, home to around 40,000 people, include that 7.1 per cent of children under two years suffer from severe acute malnutrition, and 13.6 per cent of children under five are acutely malnourished. Similar surveys in other camps show alarming rates of acute malnutrition and severe acute malnutrition among children under five, significantly surpassing World Health Organisation emergency thresholds. MSF calls for more financial, human, and logistical resources to enhance emergency food distribution, ensuring they meet the specific needs of the undernourished, including necessary vitamins and minerals.

Chad continues to receive Sudanese refugees fleeing violence. These refugees, mainly elderly, women, and children, join existing populations in areas already struggling with severe food insecurity. The violence in Darfur has disrupted farming, leading to reduced agricultural output and soaring food prices in eastern Chad.

In 2023, protection incidents were primarily characterized by physical assaults, sexual assaults, abductions, and homicides/murders, early marriages, and rape. These incidents mainly involve the civilian population as primary perpetrators. Women and girls have been the primary victims of these violations. These three types of incidents constituted 75 per cent of all reported violation cases. Men and boys were the primary victims of the violations committed during this period. Incidents of gender-based violence (GBV) are being reported less frequently to the relevant authorities. Additionally, there are challenges in accessing healthcare due to distance and the lack of free medical services, which particularly affects vulnerable women and girls. This is occurring in a context marked by abductions and increasingly unsafe spaces for them. Strengthening community-based protection remains the primary response in light of the numerous protection incidents involving the civilian population. Capacity and response to

address urgent healthcare needs remain limited and sometimes non-existent. The interventions of the Sida Rapid Response Mechanism serve as an alternative due to the limited capacity of partners, often constrained by inflexible operational zones.

In addition to recent developments in the context, humanitarian actors remain concerned about the complexity of the humanitarian situation in Chad, including:

- Food insecurity and malnutrition affect 17 departments in the Sahel strip, where more than 1.9 million people are in need of emergency food assistance, nutrition, rehabilitation and strengthening, health and livelihood support activities.
- The 2023 weather forecast of the National Meteorological Agency (ANAM) predicts heavy rainfall with a high risk of flooding that can lead to loss of crops, material property and animal and human lives in exposed localities. In 2022, more than 1.4 million people were affected by the floods, prompting the Government to declare a state of humanitarian emergency. The Government, with the support of the humanitarian community, has updated the contingency plan for the 2023 floods, estimating a situation similar to that of 2022. Approximately 1.4 million people could be affected, of whom 800,000 will be in need of humanitarian assistance. The Joint Preparedness Team updates the communication plan, the early warning system, the viability analysis of potential host sites and the capacities of partners.
- Chad remains exposed to health emergencies with exposure to recurrent diseases such as measles, cholera, malaria, etc., which is at the root of the worrying mortality rate of 860 deaths per 100,000 live births and infant mortality of 72 deaths per 1,000 live births. Preventive measures against cholera and malaria in the middle of the rainy season remain a high priority.

### 3. The humanitarian response

Chad is grappling with unprecedented humanitarian crises, including a massive influx of over 700,000 new Sudanese refugees in 10 months, ongoing internal displacement of 200,000 people since 2015, severe food insecurity affecting 2.87 million individuals and the threats of intercommunal conflicts along with natural disasters like floods and droughts. In 2023, humanitarian aid reached a record \$335 million, but this was still only 36 per cent of the needed \$920 million, leading to unmet basic needs and increased human suffering. For 2024, the required humanitarian funding has surged to \$1.125 billion. The international community is urged to increase contributions and work towards sustainable solutions to these complex challenges, highlighting the need for dynamic engagement with both the State and development donors to address not only immediate needs but also the underlying causes of these crises. In 2024, the Humanitarian Response Plan targets 4.6 million people out of a total of 6 million people in need. This targeting takes into account intervention and response capacities of various mechanisms existing as complementarity strategic and operational.

The humanitarian response plan takes into account 1.9 million people suffering from severe food insecurity during the lean season, one million people affected by displacement, including some 600,000 refugees, around 380,000 IDPs, some 127,000 Chadian returnees from neighbouring countries and around 21,000 former IDPs. Nearly 1.7 million children under the age of five are at risk of malnutrition, including 414,000 severe cases. Over 273,000 pregnant and lactating women are acutely malnourished. Health emergencies affect nearly 2 million people. Faced with a changing context, the Humanitarian Country Team (EHP) recommended in May 2023 the revision of the HRP to integrate into humanitarian planning the recent Sudanese crisis that has affected eastern Chad since April, the socio-political situation in the southern part at the root of the population displacement and the evolution of the security context in the Lake region. This changing context has prompted the adjustment of sector planning by updating multi-sector refugee planning and integrating the needs of recent returnees and newly displaced persons into the 2023 HRP. The revision also incorporates the priority activities of the various sectors until the end of the year. This revision of the HRP is aligned with UNHCR's Regional Refugee Response Plan (RRRP) for the Sudanese crisis.

## 4. Sida's humanitarian allocation

Chad is grappling with a severe humanitarian crisis, now worsened by a recent surge of refugees from Sudan. This influx compounds the already critical situation caused by refugees from Nigeria and Cameroon. There is a dire shortage of essential services, including nutrition, healthcare, water, and shelter. The international community, with Sweden's notable contributions, has played a key role in responding to needs. However, the current crisis underscores the necessity for a unified, comprehensive, and sustainable strategy to meet the complex needs of refugees in Chad. A holistic approach is crucial, one that merges developmental and humanitarian efforts to form an integrated solution. While addressing immediate needs is vital, we must also embed long-term developmental plans into our strategy to ensure sustained progress.

Sida's commitment should continue to focus on providing for the immediate needs — nutrition, healthcare, water, and shelter — while also building resilience. Partners must regularly evaluate and prioritize aid for those most at risk, especially in remote regions. Collaborations that utilize complementary development funds are essential. Sida's partners are expected to adopt a multi-sector approach that leverages their core competencies, fostering effective partnerships with other entities in the sector. Recruitment and retention of both local and international staff are critical, as is strengthening the capacities of local institutions, community groups, and civil society organizations. Testing innovative solutions is imperative, even in Chad's delicate context, to enhance the government's ability to mitigate disasters and implement early response actions. When it comes to resource allocation, there is a pressing need to synergize the efforts of multilateral and international organizations to tackle forthcoming challenges. To optimize Sida's humanitarian contribution, we will distribute funds among two UN agencies and three international organizations. The needs have escalated over the past year, prompting the

allocation of additional Swedish funds to bridge the shortfall. Consequently, Sida proposes an increase in the allocation to UNHCR for the year 2024 to reflect these changing demands.

PARTNER	SECTOR	INITIAL ALLOCATION (SEK)	
		2024	2025
AAH	WASH, Food/Cash, Health/Nutrition, Livelihood, NFI	17,000,000 <sup>1</sup>	
IRC	Safety, Health, Economic Well-being	17,000,000 <sup>2</sup>	17,000,000 <sup>2</sup>
OXFAM	Protection, WASH, Livelihoods	15,000,000 <sup>3</sup>	10,000,000 <sup>3</sup>
UNHCR	Multi-sector	30,000,000	-
UNICEF	Nutrition, Health, WASH, Protection, Education	20,000,000	-
<b>TOTAL</b>		<b>99,000,000</b>	<b>27,000,000</b>

FLEXIBLE FUNDING & ADDITIONAL ALLOCATIONS 2024		
PARTNER	FLEXIBLE FUNDING <sup>4</sup>	ADDITIONAL ALLOCATION
ICRC	15,000,000	
NRC	3,700,000	
OCHA Field Coordination <sup>5</sup>	5,000,000	
MSB (Swedish Civil Contingencies Agency) <sup>6</sup>	5,800,000	
UNHCR	15,000,000	
<b>TOTAL</b>	<b>44,500,000</b>	<b>-</b>

## 5. Humanitarian-Development-Peace Nexus

A strong and operationalized nexus approach in Chad remains essential to address underlying causes of the systematic and structural underdevelopment. Engagement of stabilisation partners

<sup>1</sup> Of which SEK 15 million already committed in 2022 for 2024.

<sup>2</sup> Already committed in 2023.

<sup>3</sup> Of which SEK 10 million already committed in 2023 for 2024 and 2025.

<sup>4</sup> Flexible funding includes a mix of allocations such as Rapid Response Mechanism and other flexible funding mechanisms.

<sup>5</sup> Sida provides flexible funding to OCHA's field coordination, and this preliminary allocation is therefore subject to change.

<sup>6</sup> Sida provides flexible funding to MSB, and this allocation is therefore subject to change.

in the Lake region is needed, this is an region where people constantly fear non-state armed groups and where attacks continue to cause displacements. UNDP leads the Stabilization Support Facility (supported by Sida), which is showing some results in the limited geographical areas it targets. But, stabilisation can also come from increased social cohesion (there are recurrent inter-ethnic clashes) and improved access to basic social services, something which is partly included in the humanitarian response.

Sida's partners are engaged in the nexus approach and several of them are working with both humanitarian and development funding sources. The list of nexus initiatives is long and includes the World Bank Refugees and Host Communities Support Project (PARCA). The main aim of this project is to help Chad scale up support for refugees and host communities through improved access to basic social services and livelihoods. The EU funded "Inclusive Development Programme in Host Areas" (DIZA) aims at improving the living conditions of locals and refugee/returnee populations through inclusive local development, in order to minimise the factors contributing to inter-community tensions, instability and ultimately the risk of increased forced displacement and conflict. Chad is one of six EU pilot countries chosen for implementation of the triple nexus approach. The EU Delegation and ECHO leads the Nexus Task Force and it is gaining momentum.

A UNICEF initiative aims at strengthening local capacities in high-risk areas to respond quickly and effectively to potential crises and natural disasters. The project enables young persons to participate in humanitarian crises preparedness and responses in their own communities and thereby reducing the impact of humanitarian disaster in their communities. The system was used in the flooding response. The low level of development funding in Chad impacts on the possibilities to make the transition from humanitarian aid to longer term resilience. With the political instability in Chad the appetite for development donors to increase their funding is limited. Development partners are involved in areas such as health, water and sanitation, resilience and climate adaption. Analysis by WFP and UNHCR indicate the need for a radical change in the approach and modalities of food support, nutrition and livelihood, with the need to scale up substantially livelihood activities, particularly agriculture. Focusing only on basic lifesaving will not ensure that the Chadian people can increase their resilience and reduce risks before they happen. This is also the dignified approach.

---

<sup>i</sup> The 2024 initial allocation of humanitarian funding is based on Sida's humanitarian allocation analysis methodology. The methodology was updated during 2023 to more clearly inform an allocation of funding that is proportional between crises, in line with Humanitarian and Good Humanitarian Donorship principles. Key changes in funding levels between the initial allocations for 2023 and 2024 for specific crises are therefore not only reflecting changes in the humanitarian situation but also changes in the analysis methodology. The analysis reflects the current humanitarian situation across crises and is being updated continuously with the latest available data, thereby allowing future allocations to be informed by how indicators have changed since previous allocations. The information in the HCA is based on reports, data, and information from partner organisations and other entities, as well as observations from field visits and dialogue with partners.